

All measurements in millimetres unless otherwise stated. Do not scale from drawing. Verify all dimensions on site. This drawing is to be read in conjunction with all other relevant drawings and specifications. Refer to Landscape Architect in case of any ambiguity or discrepancy.

KEY

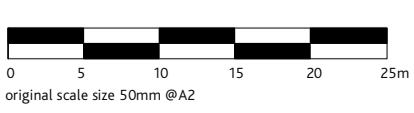
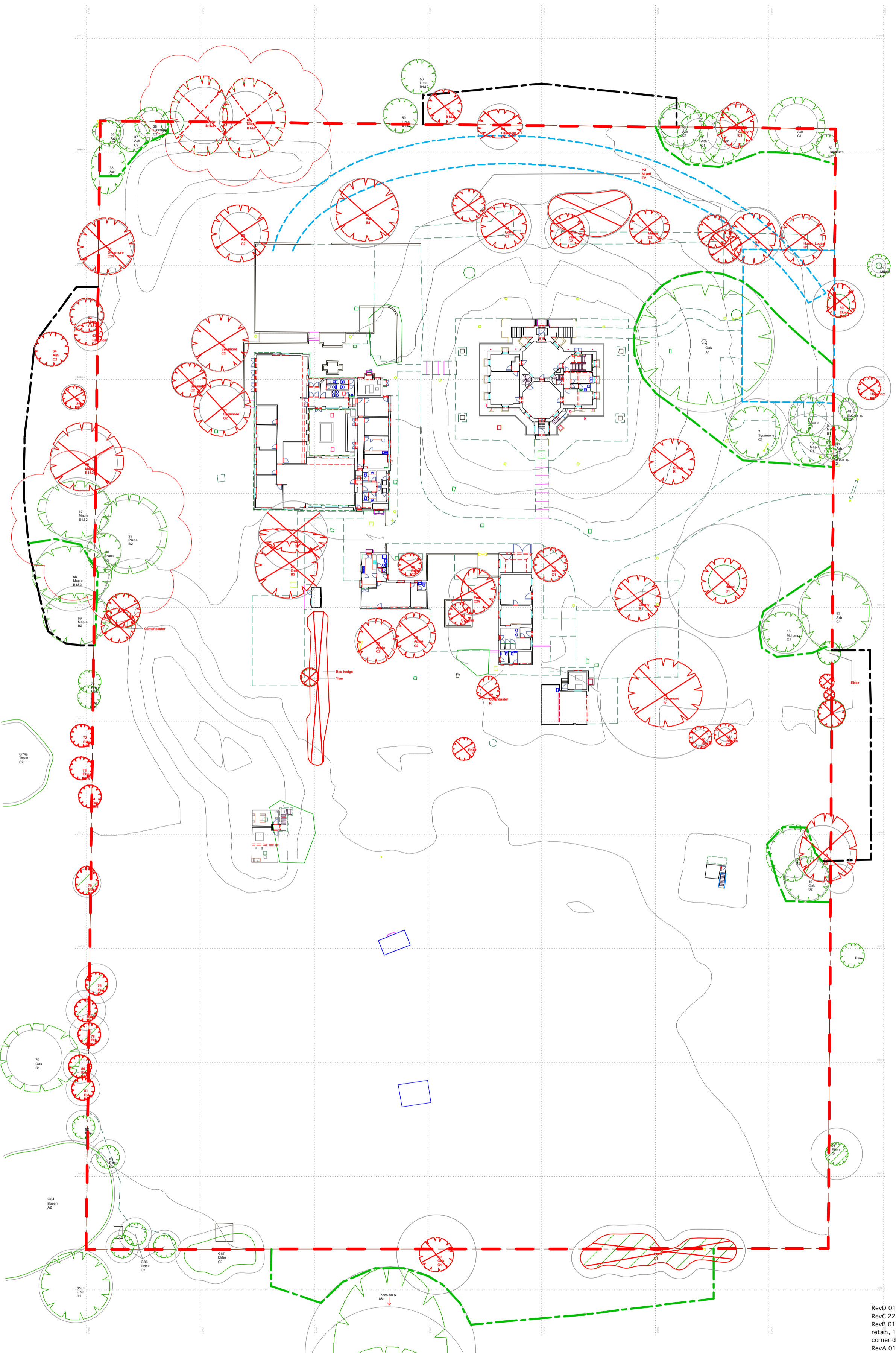
TREES WITHIN BOUNDARY OF KINGS OBSERVATORY

- | | |
|--------|--------------------------------|
| | Existing tree to retain (19no) |
| 1 | Oak (A1) |
| 5, 6 | Ash (C1) |
| 7 | Sycamore (C1) |
| 8 | Maple (C1) |
| 9 | Maple (B1) |
| 10 | Maple (C1) |
| 13 | Mulberry (C1) |
| 17, 19 | Oak (B2) |
| 29 | Plane (B2) |
| 30 | Plane (C2) |
| 35-37 | Ash (C2) |
| 38 | Hawthorn (C2) |
| 46 | Sorbus sp (C2) |
| 52 | Hawthorn (C1) |
| 83 | Elder (C2) |
| G86 | Elder (C2), (3no) |
| | Existing tree to remove (30no) |
| 3 | Oak (B1) |
| 4 | Honey Locust (B1) |
| 11 | Cherry (R) |
| 12 | Hazel (C1) |
| 14 | Sycamore (B1) |
| 15 | Cherry (R) |
| 16 | Ash (C1) |
| 18 | Oak (C2) |
| 20, 21 | Rowan (C2) |
| 22 | Cotoneaster (R) |
| 23 | Cypress (C2) |
| 24 | Pear (C2/r) |
| 25, 26 | Apple (C2) |
| 27 | Oak (B2) |
| 28 | Oak (C2) |
| 31-34 | Sycamore (C2) |
| 39, 40 | Ash (B2) |
| 41 | Plum (C2) |
| 42 | Holly (C2) |
| 43 | Yew (C2) |
| 44 | Maple (C2) |
| 56 | Hawthorn (C1) |
| 76, 78 | Elder (C2) |
| H2 | Mixed shrubs (C2) |
| G90 | Elder (C1), (2no) |

TREES ON RMSGC LAND

- | | |
|------------|---|
| | Existing tree (surveyed) to retain (20no) |
| 47 | Ash (C2) |
| 48 | Sorbus sp (C2/r) |
| 51 | Maple (C1) |
| 53 | Ash (C1) |
| 55 | Ash (C1) |
| 58, 59 | Lime (B1&2) |
| 67, 68, 69 | Maple (B1&2) |
| 70-71 | Elder (NBS) |
| 79 | Oak (B1) |
| 82 | Elder (C2) |
| G84 | Beech (A2) |
| 85 | Oak (B1) |
| 88 | Plane (A1&2) |
| 88a | Oak (A1&2) |
| 91 | Elder (C1) |
| 93 | Ash (C1) |
| G74a | Thorn (C2), (7no) |
| G87 | Elder (C2), (3no) |
| | Existing tree to remove (22no) |
| 49 | Hawthorn (C2) |
| 50 | Elder (C1/r) |
| 54 | Cherry (C1) |
| 57 | Lime (B1&2) |
| 60, 61 | Maple (B1&2) |
| 62 | Lime (C1&2) |
| 63 | Hawthorn (C2) |
| 64 | Ash (C2) |
| 65 | Lime (C2) |
| 66 | Maple (B1&2) |
| 72-74 | Elder (NBS) |
| 75 | Elder (C2) |
| 77 | Elder (C2) |
| 80, 81 | Elder (C2) |
| 89 | Oak (C1) |
| 92 | Spruce (C1) |
| 94, 95 | Poplar (R) |
| G90 | Elder (C1), (7no) |

NOTES:
 1. Refer to Landmark Trees: "Tree Survey" and "Arboricultural Impact Assessment Report".
 2. Refer to Tree Protection drawing 001/03/003.



original scale size 50mm @A2

- Revision Notes**
- 1, T29 (Plane), T30 (Plane), T67 (Maple), T68 (Maple) retained
 - 2, T64 (Ash) to be removed / translocated
 - 3, T60 (Maple), T61 (Maple) phased removal

RevD 01.06.13: RMSGC comments
 RevC 22.02.13: eastern ha-ha, oak retained
 RevB 01.10.12: 2no oaks retained (T17, T19), 3no ash (T05, T06, T55) to retain, 1no sycamore to remove (T14), 3no elder (T72 - T74) to remove in SW corner due to regrading
 RevA 01.08.12: 1no elder retained in SW corner
 Revisions

KINGS OBSERVATORY, KEW

Tree Removal
 Client: Kew Holdings Limited
 Scale: 1:500 @A2
 Date: August 2011
 Dwg no: 001/03/005 RevD

JOHN DAWKINS LANDSCAPE ARCHITECTS